

PUBLIC INFORMATION BULLETIN NO. 30
APRIL - MAY 2021
AWA STREET WASTEWATER PUMP STATION
FORCE MAIN AND SEWER SYSTEM IMPROVEMENTS
WAIAKAMILO ROAD TRUNK SEWER
JOB NO. W5-16

GENERAL INFORMATION

This bulletin is published to the project website (www.awasewer.org) monthly to keep the community informed about construction work associated with the Awa Street Wastewater Pump Station Force Main and Sewer Improvements – Waiakamilo Road Trunk Sewer Project. The contract Notice-To-Proceed was issued to FV Coluccio Construction Company (FVCCC) on June 27, 2018. Heavy construction is scheduled to continue through the end of 2021. Please refer to the attached map and visit the project website for more detailed information about this project. To request hard copies of the monthly information bulletins please call the project hotline at (808) 219-7009.

UPDATES FOR ONGOING ACTIVITIES

FVCCC performed the following work in March:

- Relocation of underground utilities.
- Installation of a sewer bypass.
- Pre-drilling and jet grouting for construction of microtunneling shafts.
- Construction of microtunneling and manhole installation shafts.
- Installation of new sewer lines by microtunneling, including probing.
- Installation of new sewer manholes.
- Restoration of pavement.

APRIL/MAY FORECAST OF ACTIVITIES

The activities listed below are scheduled to continue and/or begin in April and/or May. The approximate locations and work hours for these activities are shown on the attached map.

- Installation of a sewer bypass.
- Pre-drilling and jet grouting for construction of microtunneling shafts.
- Construction of microtunneling and manhole installation shafts.
- Installation of new sewer lines by microtunneling.

- Installation of new sewer lines by open trenching, including trench restoration.
- Installation of new sewer manholes.
- Restoration of pavement and striping.

TRAFFIC UPDATES FOR APRIL/MAY

Construction work will require relatively isolated lane closures at several locations on Waiakamilo Rd., Houghtailing St., Halona St., and/or School St. Access to driveways will be maintained via right turn motions from the travel lanes fronting them; however, access to some driveways via left turn motions may not be available due to the presence of work area closures.

Along Waiakamilo Rd., Houghtailing St, and School St. daytime and some early evening work is anticipated to occur.

Detours may be involved with work located within or near the intersection of School St. See below for associated traffic detours.

- **Traffic Detour for Work at N. School Street**
7:00 am to 5:30 pm, Monday through Saturday
On Houghtailing St. in both the makai and mauka bound directions, through and/or left turn movements may be restricted.

On N. School St. in the Diamond Head bound direction, left turns may be restricted; while in the ewa bound direction, both left and right turns may be restricted.

In addition to these closures, the street segment of Houghtailing St. between N. School St. and Ahiahi St. may be closed and open to *LOCAL TRAFFIC AND THE BUS ONLY*.

Drivers affected by any of these work area closures will be detoured via Bernice St., Kapalama Ave., Hala Dr., and/or Aupuni St.

CONTACT INFORMATION

For more information about this project, please visit the project website: www.awasewer.org or call the project hotline at (808) 219-7009.

**CONSTRUCTION ACTIVITIES SCHEDULED
FOR APRIL - MAY 2021**

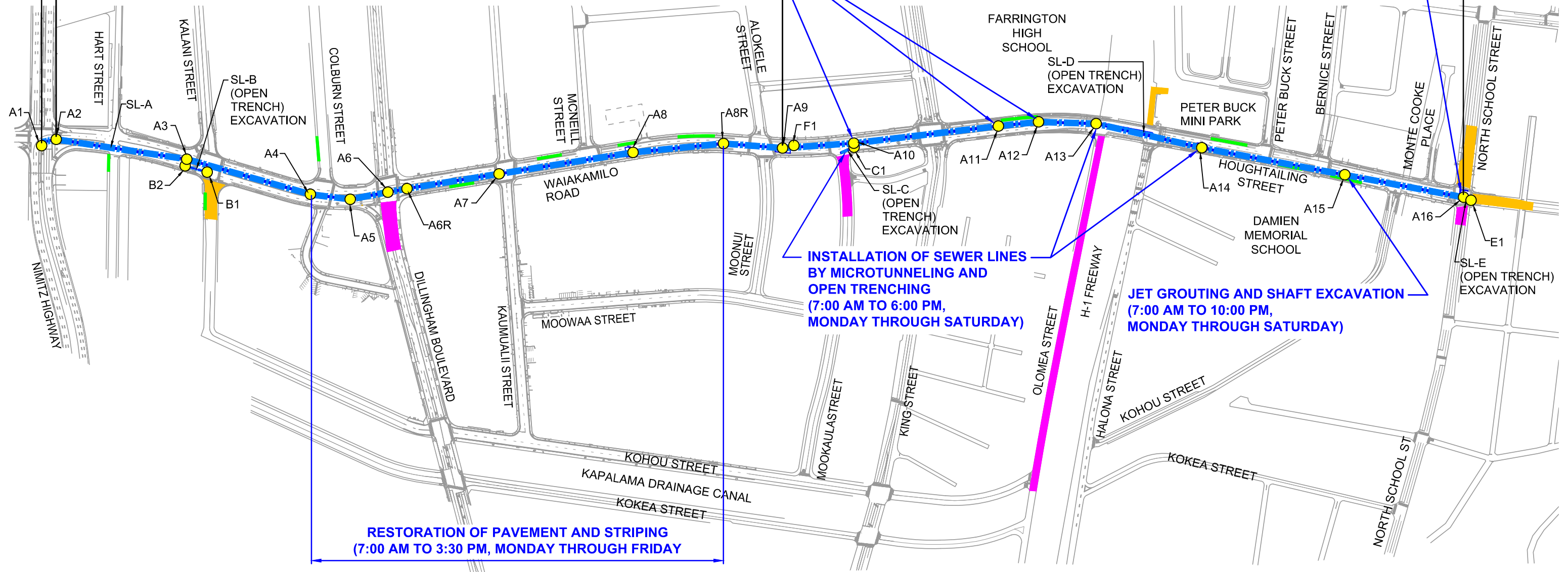
54" PIPE
INSTALLATION
BY OPEN
EXCAVATION

54" PIPE INSTALLATION BY MICROTUNNELING

42" PIPE INSTALLATION BY MICROTUNNELING

**INSTALLATION OF NEW MANHOLES
(7:00 AM TO 5:30 PM,
MONDAY THROUGH FRIDAY)**

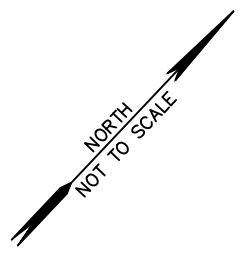
**INSTALLATION OF A SEWER BYPASS, PRE-DRILLING, AND
JET GROUTING
(7:00 AM TO 5:30 PM, MONDAY THROUGH SATURDAY)**



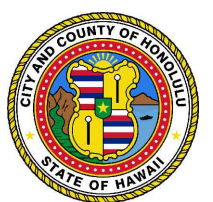
**INSTALLATION OF SEWER LINES
BY MICROTUNNELING AND
OPEN TRENCHING
(7:00 AM TO 6:00 PM,
MONDAY THROUGH SATURDAY)**

**JET GROUTING AND SHAFT EXCAVATION
(7:00 AM TO 10:00 PM,
MONDAY THROUGH SATURDAY)**

**RESTORATION OF PAVEMENT AND STRIPING
(7:00 AM TO 3:30 PM, MONDAY THROUGH FRIDAY)**



- LEGEND:**
- NEW SEWER MANHOLE
 - ▬▬▬ NEW SEWER LINE
 - ▬▬▬ ABANDONED SEWER MANHOLE AND SEWER LINE WORK AREA
 - ▬▬▬ TEMPORARY EQUIPMENT STORAGE AREA
 - ▬▬▬ TEMPORARY BYPASS WORK AREA



CITY AND COUNTY OF HONOLULU
DEPARTMENT OF ENVIRONMENTAL SERVICES

**AWA STREET WASTEWATER PUMP STATION
FORCE MAIN AND SEWER SYSTEM IMPROVEMENTS
WAIAKAMILO ROAD TRUNK SEWER, C&C JOB NO. W5-16**