

**PUBLIC INFORMATION BULLETIN NO. 27**  
**JANUARY – FEBRUARY 2021**  
**AWA STREET WASTEWATER PUMP STATION**  
**FORCE MAIN AND SEWER SYSTEM IMPROVEMENTS**  
**WAIAKAMILO ROAD TRUNK SEWER**  
**JOB NO. W5-16**

**GENERAL INFORMATION**

This bulletin is published to the project website ([www.awasewer.org](http://www.awasewer.org)) monthly to keep the community informed about construction work associated with the Awa Street Wastewater Pump Station Force Main and Sewer Improvements – Waiakamilo Road Trunk Sewer Project. The contract Notice-To-Proceed was issued to FV Coluccio Construction Company (FVCCC) on June 27, 2018. Heavy construction is scheduled to continue through the Summer of 2021. Please refer to the attached map and visit the project website for more detailed information about this project. To request hard copies of the monthly information bulletins please call the project hotline at (808) 219-7009.

**UPDATES FOR ONGOING ACTIVITIES**

FVCCC performed the following work in December:

- Relocation of underground utilities.
- Pre-drilling, jet grouting, and sheetpiling for construction of microtunneling shafts.
- Construction of microtunneling and manhole installation shafts.
- Installation of new sewer lines by microtunneling.
- Installation of new sewer manholes.
- Restoration of landscaping and planting of new trees.

**JANUARY/FEBRUARY FORECAST OF ACTIVITIES**

The activities listed below are scheduled to continue and/or begin in January and/or February. The approximate locations and work hours for these activities are shown on the attached map.

- Relocation of underground utilities.
- Pre-drilling, jet grouting, and sheetpiling for construction of microtunneling shafts.
- Construction of microtunneling and manhole installation shafts.

- Installation of new sewer manholes.

**TRAFFIC UPDATES FOR JANUARY/  
FEBRUARY**

Construction work will require relatively isolated lane closures at several locations on Nimitz Hwy., Waiakamilo Rd., Houghtailing St., and/or School St. Access to driveways will be maintained via right turn motions from the travel lanes fronting them; however, access to some driveways via left turn motions may not be available due to the presence of work area closures.

Along Waiakamilo Rd., Houghtailing St, and School St. daytime and some early evening work is anticipated to occur.

Detours may be involved with work located within or near the intersection of School St. See below for associated traffic detours.

- **Traffic Detour for Work at N. School Street**  
**8:30 am to 3:30 pm, Monday through Saturday**  
On Houghtailing St., through and/or left turn movements in either or both the north and/or south bound directions may be restricted. On School Street, left turn movements in both east and west bound directions may be restricted.

Drivers affected by these work area closures will be detoured via Bernice St., Kapalama Ave., Hala Dr., and Aupuni St.

**CONTACT INFORMATION**

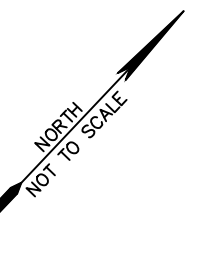
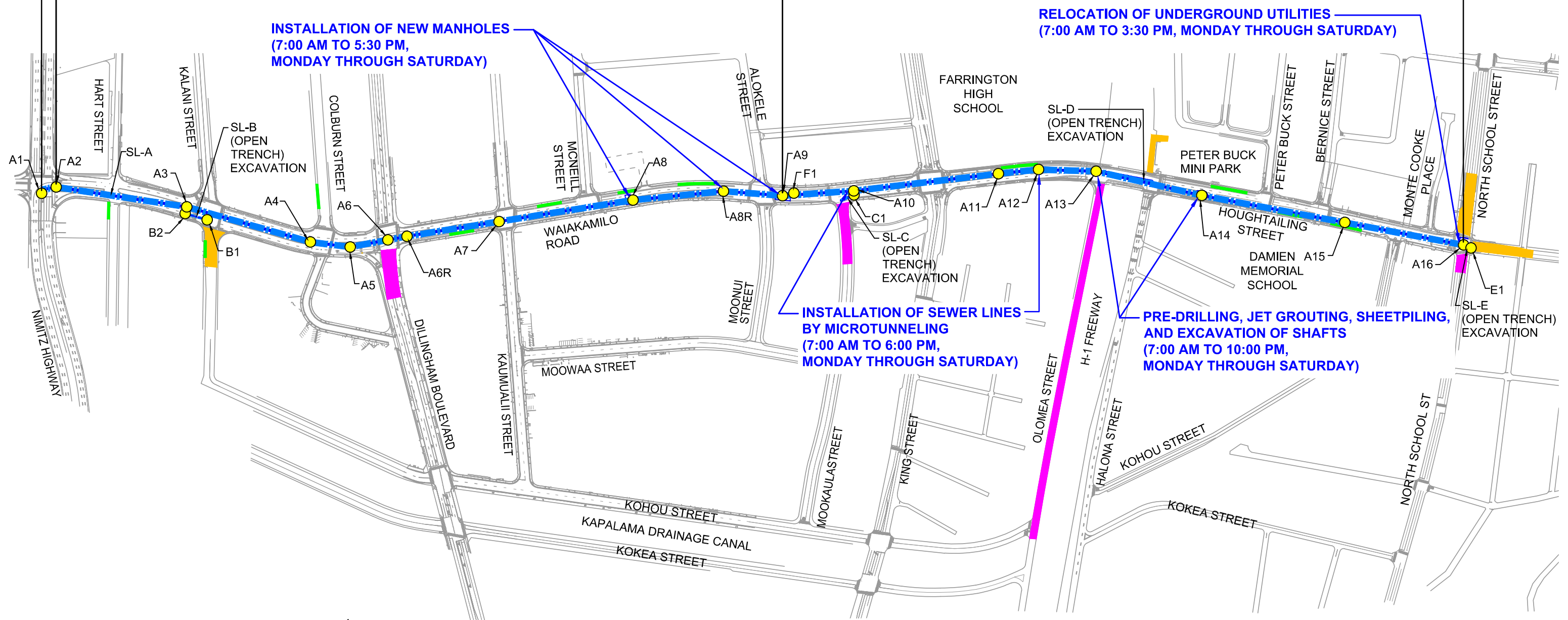
For more information about this project, please visit the project website: [www.awasewer.org](http://www.awasewer.org) or call the project hotline at (808) 219-7009.

**CONSTRUCTION ACTIVITIES SCHEDULED FOR JANUARY - FEBRUARY 2021**

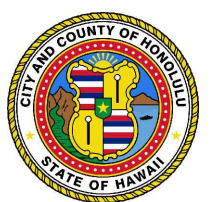
54" PIPE INSTALLATION BY OPEN EXCAVATION

54" PIPE INSTALLATION BY MICROTUNNELING

42" PIPE INSTALLATION BY MICROTUNNELING



- LEGEND:**
- NEW SEWER MANHOLE
  - - - NEW SEWER LINE
  - ABANDONED SEWER MANHOLE AND SEWER LINE WORK AREA
  - TEMPORARY EQUIPMENT STORAGE AREA
  - TEMPORARY BYPASS WORK AREA



CITY AND COUNTY OF HONOLULU  
DEPARTMENT OF ENVIRONMENTAL SERVICES

**AWA STREET WASTEWATER PUMP STATION  
FORCE MAIN AND SEWER SYSTEM IMPROVEMENTS  
WAIAKAMILO ROAD TRUNK SEWER, C&C JOB NO. W5-16**