

**PUBLIC INFORMATION BULLETIN NO. 20**  
**MAY 2020**  
**AWA STREET WASTEWATER PUMP STATION**  
**FORCE MAIN AND SEWER SYSTEM IMPROVEMENTS**  
**WAIAKAMILO ROAD TRUNK SEWER**  
**JOB NO. W5-16**

### GENERAL INFORMATION

This bulletin is published to the project website ([www.awasewer.org](http://www.awasewer.org)) monthly to keep the community informed about construction work associated with the Awa Street Wastewater Pump Station Force Main and Sewer Improvements – Waiakamilo Road Trunk Sewer Project. The contract Notice-To-Proceed was issued to FV Coluccio Construction Company (FVCCC) on June 27, 2018. Heavy construction is scheduled to continue through the Summer of 2021. Please refer to the attached map and visit the project website for more detailed information about this project. To request hard copies of the monthly information bulletins please call the project hotline at (808) 219-7009.

### UPDATES FOR ONGOING ACTIVITIES

FVCCC performed the following work in April:

- Relocation of a water main.
- Pre-drilling and jet grouting for construction of microtunneling shafts and pipe and manhole excavations.
- Construction of microtunneling and manhole installation shafts.
- Installation of new sewer lines by microtunneling.
- Installation of manholes

### MAY FORECAST OF ACTIVITIES

The activities listed below are scheduled to continue and/or begin in May. The approximate locations and work hours for these activities are shown on the attached map.

- Pre-drilling and jet grouting for construction of microtunneling shafts and pipe and manhole excavations.
- Construction of microtunneling and manhole installation shafts, including installation of sheetpiles.
- Installation of new sewer lines by microtunneling.
- Installation of manholes.

### TRAFFIC UPDATES FOR MAY

Construction work will require relatively isolated lane closures at several locations on Waiakamilo Rd., Houghtailing St., Dillingham Blvd., and/or Nimitz Hwy. Access to driveways will be maintained via right turn motions from the travel lanes fronting them; however, access to some driveways via left turn motions may not be available due to the presence of work area closures.

Along Waiakamilo Rd., continuous daytime and nighttime work is anticipated to occur. On Nimitz Hwy., near the intersection with Waiakamilo Rd., work is anticipated to occur during afternoon and nighttime hours on the weekdays and all day on the weekends.

Detours may be involved with work located within or near the intersections of Nimitz Hwy. and Dillingham Blvd. See below for associated traffic detours.

- **Traffic Detour for Work near Nimitz Hwy.**  
**12:00 pm to 2:00 am (Monday through Thursday) and**  
**Continuously from 12:00 pm Friday to 2:00 am Monday**  
Through and left turn movements out of Piers 39 and 40 towards Waiakamilo Rd. and Nimitz Hwy. may be prohibited and detoured via right turn and U-turn on Nimitz Hwy.

Left turn movements from Waiakamilo Rd. towards Nimitz Hwy. eastbound; and through movements from Waiakamilo Rd. to Piers 39 and 40 may be prohibited and detoured via Kalani St. and Kalihi St.

Left turn movements from Nimitz Hwy. towards Waiakamilo Rd. and Piers 39 and 40 may be prohibited and detoured via U-turns on Nimitz Hwy near Pier 38 and Libby Street, respectively.

- **Traffic Detour for Work at Dillingham Blvd.**

**24-hours Continuous, 7 days a week**

Some left turn movements and some through movements at the Dillingham Blvd. and Waiakamilo Rd. intersection may be prohibited due to work within the middle of the intersection.

Drivers affected by the closures will be detoured via Kohou St., Kaumualii St., McNeill St., and/or Kalani St.

## **CONTACT INFORMATION**

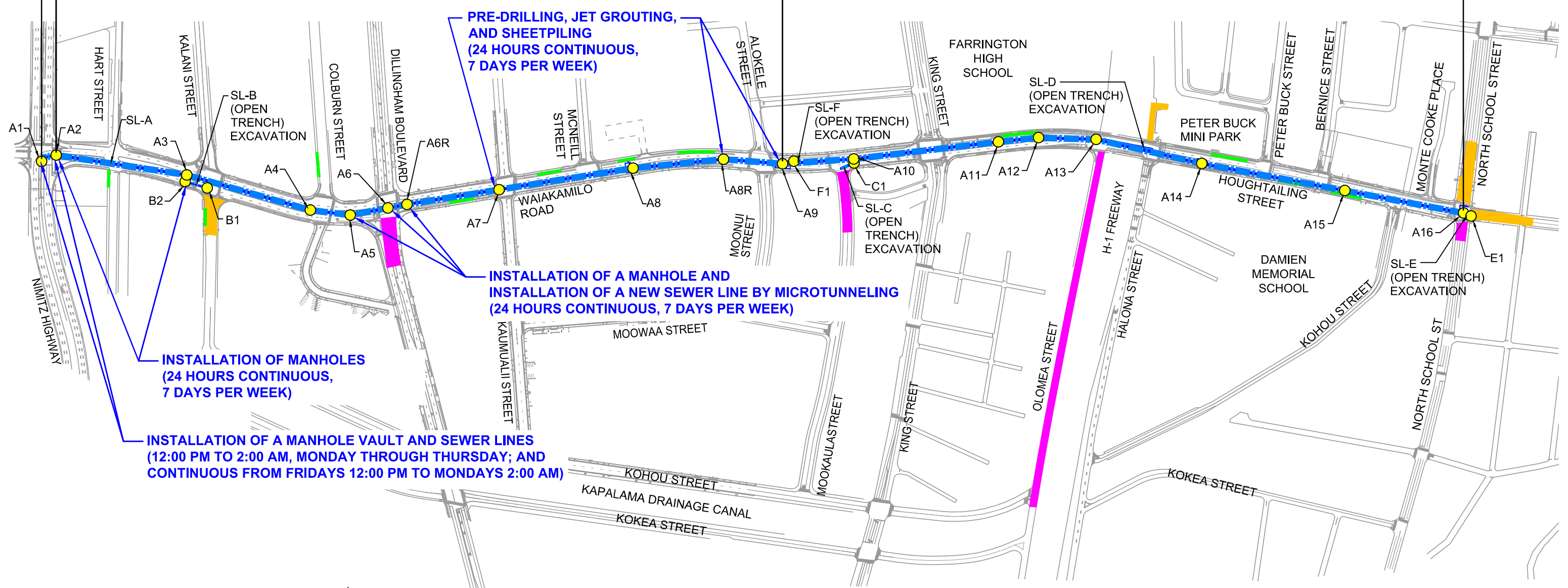
For more information about this project, please visit the project website: [www.awasewer.org](http://www.awasewer.org) or call the project hotline at (808) 219-7009.

**CONSTRUCTION ACTIVITIES SCHEDULED FOR MAY 2020**

54" PIPE  
INSTALLATION  
BY OPEN  
EXCAVATION

54" PIPE INSTALLATION BY MICROTUNNELING

42" PIPE INSTALLATION BY MICROTUNNELING



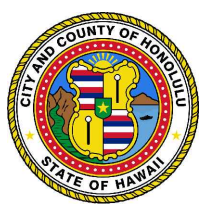
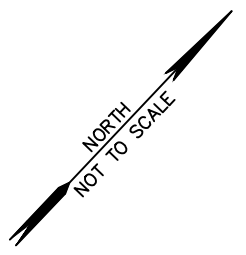
PRE-DRILLING, JET GROUTING, AND SHEETPIILING (24 HOURS CONTINUOUS, 7 DAYS PER WEEK)

INSTALLATION OF A MANHOLE AND INSTALLATION OF A NEW SEWER LINE BY MICROTUNNELING (24 HOURS CONTINUOUS, 7 DAYS PER WEEK)

INSTALLATION OF MANHOLES (24 HOURS CONTINUOUS, 7 DAYS PER WEEK)

INSTALLATION OF A MANHOLE VAULT AND SEWER LINES (12:00 PM TO 2:00 AM, MONDAY THROUGH THURSDAY; AND CONTINUOUS FROM FRIDAYS 12:00 PM TO MONDAYS 2:00 AM)

- LEGEND:
- NEW SEWER MANHOLE
  - - - NEW SEWER LINE
  - ABANDONED SEWER MANHOLE AND SEWER LINE WORK AREA
  - TEMPORARY EQUIPMENT STORAGE AREA
  - TEMPORARY BYPASS WORK AREA



CITY AND COUNTY OF HONOLULU  
DEPARTMENT OF ENVIRONMENTAL SERVICES

**AWA STREET WASTEWATER PUMP STATION  
FORCE MAIN AND SEWER SYSTEM IMPROVEMENTS  
WAIAKAMILO ROAD TRUNK SEWER, C&C JOB NO. W5-16**