

PUBLIC INFORMATION BULLETIN NO. 12
SEPTEMBER 2019
AWA STREET WASTEWATER PUMP STATION
FORCE MAIN AND SEWER SYSTEM IMPROVEMENTS
WAIAKAMILO ROAD TRUNK SEWER
JOB NO. W5-16

GENERAL INFORMATION

This bulletin is published to the project website (www.awasewer.org) monthly to keep the community informed about construction work associated with the Awa Street Wastewater Pump Station Force Main and Sewer Improvements – Waiakamilo Road Trunk Sewer Project. The contract Notice-To-Proceed was issued to FVCCC June 27, 2018. Heavy construction is scheduled to continue through the end of 2020. Please refer to the attached map and visit the project website for more detailed information about this project. To request hard copies of the monthly information bulletins please call the project hotline at (808) 219-7009.

UPDATES FOR ONGOING ACTIVITIES

FVCCC performed the following work in August:

- Potholing for existing utilities.
- Relocation of underground and overhead utilities.
- Pre-drilling for jet grouting and construction of microtunneling shafts.
- Jet grouting for groundwater control.
- Construction of microtunneling shafts.

SEPTEMBER FORECAST OF ACTIVITIES

The activities listed below are scheduled to continue and/or begin in September. The approximate locations and work hours for these activities are shown on the attached map.

- Relocation of underground and overhead utilities.
- Investigation and pre-excavation of underground obstructions.
- Pre-drilling for jet grouting and construction of microtunneling shafts.
- Jet grouting for groundwater control.
- Construction of microtunneling shafts.

TRAFFIC UPDATES FOR SEPTEMBER

Construction work will require relatively isolated lane closures at several locations on Waiakamilo Rd. and Houghtailing St. Access to driveways will be

maintained via right turn motions from the travel lanes fronting them; however, access to some driveways via left turn motions may not be available due to the presence of work area closures.

Continuous daytime and nighttime work is anticipated to occur along Waiakamilo Road.

Detours may be involved with work located within or near the intersections of Nimitz Hwy. and Dillingham Blvd. See below and the following page for associated traffic detours (*Note: the detours shown are not expected to occur simultaneously*).

- **Traffic Detour for Work near Nimitz Hwy.**

6:00 pm to 2:00 am (7 days per week)

Through movements out of Piers 39 and 40 towards Waiakamilo Rd. will be prohibited and detoured via Nimitz Hwy. Left and right turn movements out of Piers 39 and 40 towards Nimitz Hwy. will be maintained.

Left turn movements from Nimitz Hwy. towards Waiakamilo Rd. will be prohibited and detoured via U-turn on Nimitz Hwy near Pier 38.

6:00 pm to 6:00 am (Friday); 6:00 pm to 7:00 am

(Saturday); and/or 6:00 pm to 2:00 am (Sunday)

Right turns from Nimitz Hwy. onto Waiakamilo Rd. will be prohibited and detoured via Kalihi St. and Dillingham Blvd.

- **Traffic Detour for Work at Dillingham Blvd.**

8:00 am to 5:00 pm (7 days per week)

All left turn movements from Dillingham Blvd. onto Waiakamilo Rd. and from Waiakamilo Rd. onto Dillingham Blvd. will be prohibited. Through and right turn movements will be maintained.

Drivers affected by this closure will be detoured via Kohou St., Kaumualii St., McNeill St., and/or Kalani St.

CONTACT INFORMATION

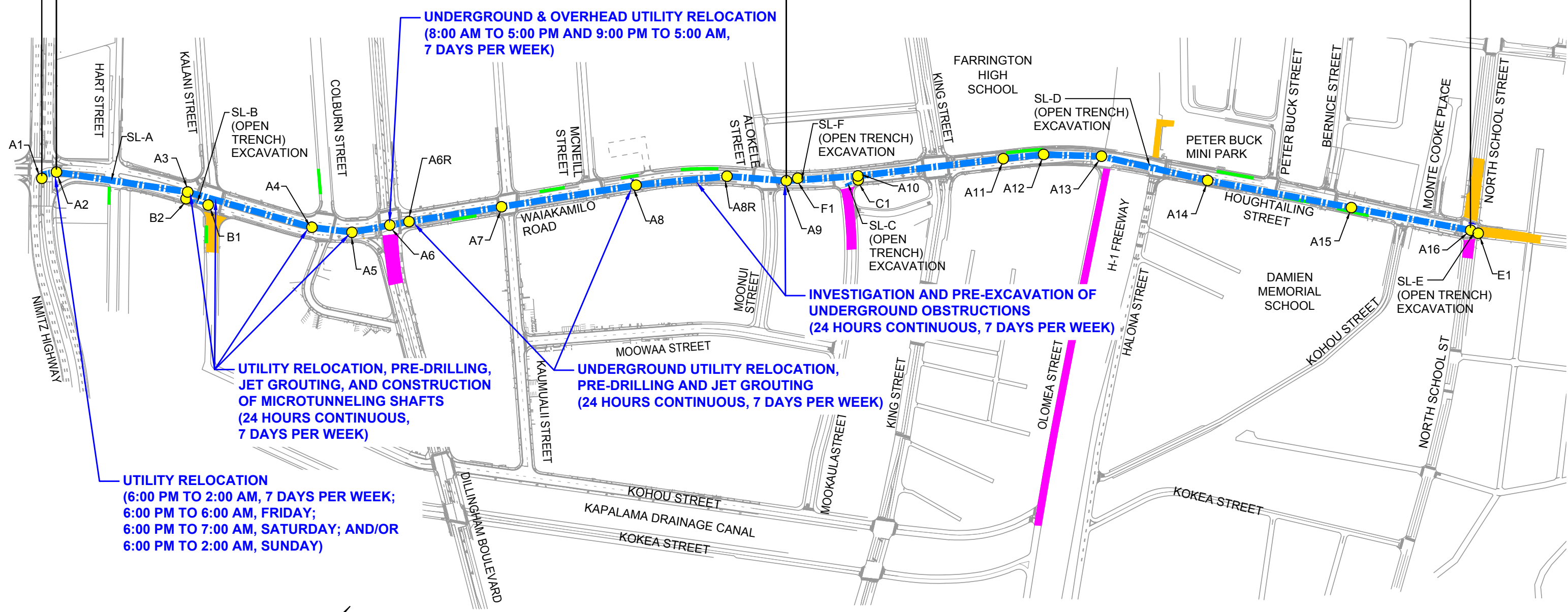
For more information about this project, please visit the project website: www.awasewer.org or call the project hotline at (808) 219-7009.

CONSTRUCTION ACTIVITIES SCHEDULED FOR SEPTEMBER 2019

54" PIPE INSTALLATION BY OPEN EXCAVATION

54" PIPE INSTALLATION BY MICROTUNNELING

42" PIPE INSTALLATION BY MICROTUNNELING



UTILITY RELOCATION, PRE-DRILLING, JET GROUTING, AND CONSTRUCTION OF MICROTUNNELING SHAFTS (24 HOURS CONTINUOUS, 7 DAYS PER WEEK)

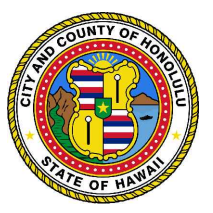
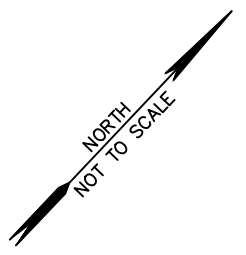
UTILITY RELOCATION (6:00 PM TO 2:00 AM, 7 DAYS PER WEEK; 6:00 PM TO 6:00 AM, FRIDAY; 6:00 PM TO 7:00 AM, SATURDAY; AND/OR 6:00 PM TO 2:00 AM, SUNDAY)

UNDERGROUND & OVERHEAD UTILITY RELOCATION (8:00 AM TO 5:00 PM AND 9:00 PM TO 5:00 AM, 7 DAYS PER WEEK)

INVESTIGATION AND PRE-EXCAVATION OF UNDERGROUND OBSTRUCTIONS (24 HOURS CONTINUOUS, 7 DAYS PER WEEK)

UNDERGROUND UTILITY RELOCATION, PRE-DRILLING AND JET GROUTING (24 HOURS CONTINUOUS, 7 DAYS PER WEEK)

- LEGEND:**
- NEW SEWER MANHOLE
 - NEW SEWER LINE
 - ABANDONED SEWER MANHOLE AND SEWER LINE WORK AREA
 - TEMPORARY EQUIPMENT STORAGE AREA
 - TEMPORARY BYPASS WORK AREA



CITY AND COUNTY OF HONOLULU
DEPARTMENT OF ENVIRONMENTAL SERVICES

**AWA STREET WASTEWATER PUMP STATION
FORCE MAIN AND SEWER SYSTEM IMPROVEMENTS
WAIAKAMILO ROAD TRUNK SEWER, C&C JOB NO. W5-16**