

**PUBLIC INFORMATION BULLETIN NO. 7**  
**APRIL 2019**  
**AWA STREET WASTEWATER PUMP STATION**  
**FORCE MAIN AND SEWER SYSTEM IMPROVEMENTS**  
**WAIAKAMILO ROAD TRUNK SEWER**  
**JOB NO. W5-16**

### GENERAL INFORMATION

This bulletin is published to the project website ([www.awasewer.org](http://www.awasewer.org)) monthly to keep the community informed about construction work associated with the Awa Street Wastewater Pump Station Force Main and Sewer Improvements – Waiakamilo Road Trunk Sewer Project. The contract Notice-To-Proceed was issued to FVCCC June 27, 2018. Heavy construction is scheduled to continue through the summer of 2020. Please refer to the attached map and visit the project website for more detailed information about this project. To request hard copies of the monthly information bulletins please call the project hotline at (808) 219-7009.

### UPDATES FOR ONGOING ACTIVITIES

- Surveying and potholing to confirm locations of existing underground utilities began in August and is scheduled to continue into April.
- Environmental soil sampling began in October and is scheduled to continue through April.

### APRIL FORECAST OF ACTIVITIES

The activities listed below are scheduled to continue and/or begin in April. The approximate locations and work hours for these activities are shown on the attached map.

- Surveying and potholing to confirm locations of existing underground utilities
- Environmental soil sampling
- Relocation of underground utilities

### TRAFFIC UPDATES FOR APRIL

Daytime construction work will require relatively isolated lane closures at several locations on Waiakamilo Rd. and Houghtailing St. Detours will be involved with work at the intersections of Dillingham Blvd. and School St. Access to driveways will be maintained via right turn motions from the travel lanes fronting them; however, access to some driveways via left turn motions may not be available due to the presence of work area closures.

See below and the following page for associated traffic detours.

- **Traffic Detour for Work at Dillingham Blvd**  
**8:30 am to 3:30 pm (7 days a week)**  
All left turn movements from Dillingham Blvd. onto Waiakamilo Rd. and from Waiakamilo Rd. onto Dillingham Blvd. will be prohibited and detoured via Kohou St., Kaumuali'i St., McNeill St., and Kalani St. Through and right turn movements will be maintained.
- **Traffic Detour for Work at N. School St.**  
**8:30 am to 3:30 pm (7 days a week)**  
The following movements will be prohibited during work at the intersection of N. School St.:
  - All left turn movements from N. School St. onto Houghtailing St.
  - Thru traffic in the north bound lanes of Houghtailing St. crossing N. School St.
  - Left turn movements from Houghtailing St. heading east onto N. School St.
  - Thru traffic in the west bound lanes of N. School St. crossing Houghtailing St. The west bound lanes of N. School St. between Aupuni St. and Houghtailing St. will be closed to thru traffic. Access into this segment will be open to *LOCAL TRAFFIC ONLY*.

Drivers affected by this closure will be detoured via Aupuni St., Hala Dr., N. School St., Kapalama Ave., Bernice St., and/or Houghtailing St.

### CONTACT INFORMATION

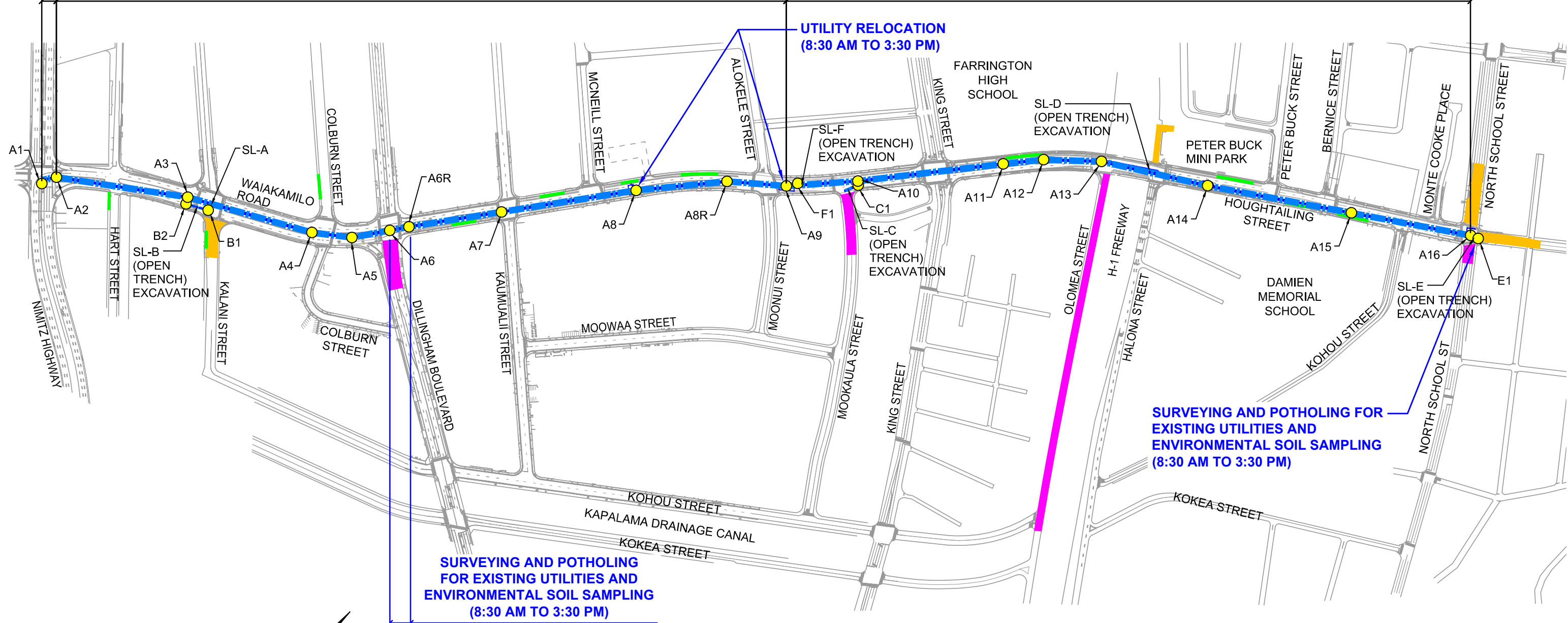
For more information about this project, please visit the project website: [www.awasewer.org](http://www.awasewer.org) or call the project hotline at (808) 219-7009.

**CONSTRUCTION ACTIVITIES SCHEDULED FOR APRIL 2019**

54" PIPE  
INSTALLATION  
BY OPEN  
EXCAVATION

54" PIPE INSTALLATION BY MICROTUNNELING

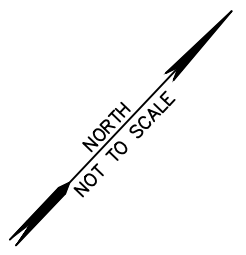
42" PIPE INSTALLATION BY MICROTUNNELING



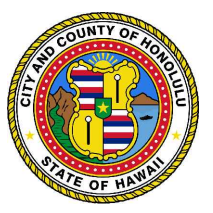
UTILITY RELOCATION  
(8:30 AM TO 3:30 PM)

SURVEYING AND POTHOLING FOR  
EXISTING UTILITIES AND  
ENVIRONMENTAL SOIL SAMPLING  
(8:30 AM TO 3:30 PM)

SURVEYING AND POTHOLING  
FOR EXISTING UTILITIES AND  
ENVIRONMENTAL SOIL SAMPLING  
(8:30 AM TO 3:30 PM)



- LEGEND:
- NEW SEWER MANHOLE
  - ▬▬▬ NEW SEWER LINE
  - ▬▬▬ ABANDONED SEWER MANHOLE AND SEWER LINE WORK AREA
  - ▬▬▬ TEMPORARY EQUIPMENT STORAGE AREA
  - ▬▬▬ TEMPORARY BYPASS WORK AREA



CITY AND COUNTY OF HONOLULU  
DEPARTMENT OF ENVIRONMENTAL SERVICES

**AWA STREET WASTEWATER PUMP STATION  
FORCE MAIN AND SEWER SYSTEM IMPROVEMENTS  
WAIAKAMILO ROAD TRUNK SEWER, C&C JOB NO. W5-16**