

PUBLIC INFORMATION BULLETIN NO. 2
OCTOBER 2018
AWA STREET WASTEWATER PUMP STATION
FORCE MAIN AND SEWER SYSTEM IMPROVEMENTS
WAIAKAMILO ROAD TRUNK SEWER
JOB NO. W5-16

GENERAL INFORMATION

This bulletin is published to the project website (www.awasewer.org) monthly to keep the community informed about construction work associated with the Awa Street Wastewater Pump Station Force Main and Sewer Improvements – Waiakamilo Road Trunk Sewer Project. The contract Notice-To-Proceed was issued to FVCCC June 27, 2018. Heavy construction is scheduled to continue through the summer of 2020. Please refer to the attached map and visit the project website for more detailed information about this project. To request hard copies of the monthly information bulletins please call the project hotline at (808) 219-7009.

UPDATES FOR ONGOING ACTIVITIES

- Surveying and potholing to confirm locations of existing underground utilities began in August and is scheduled to continue into December.
- Environmental soil sampling began in October and is scheduled continue through December.
- Tree relocation was performed earlier this month and the tree pruning will be a continuous, as needed on the project.

NOVEMBER FORECAST OF ACTIVITIES

The activities listed below are scheduled to continue and/or begin in November. The approximate locations and work hours for these activities are shown on the attached map.

- Surveying and potholing to confirm locations of existing underground utilities.
- Environmental soil sampling.
- Tree pruning, as needed.
- Utility Relocations
- Jet Grout Test Program
- Shaft Construction

TRAFFIC UPDATES FOR NOVEMBER

Daytime construction work will require relatively isolated lane closures at several locations on Waiakamilo Rd. and Houghtailing St. including the intersections of Nimitz Hwy., Dillingham Blvd. and School St. Detours will be involved with work at the intersections of Nimitz Hwy. and Dillingham Blvd. Access to driveways will be maintained via right turn motions from the travel lanes fronting them; however, access to some driveways via left turn motions may not be available due to the presence of work area closures.

Night work will likely be performed intermittently at the intersections of Nimitz Hwy. / Waiakamilo Rd. and Dillingham Blvd. / Waiakamilo Rd. See below for associated traffic detours.

• **Traffic Detour for Work at Nimitz Hwy**

9:00 pm to 2:00 am (7 days a week)

Through movements out of Piers 39 and 40 towards Waiakamilo Rd. will be prohibited and detoured via Nimitz Hwy. Left and right turn movements out of Piers 39 and 40 towards Nimitz Hwy. will be maintained.

Left turn movements from Nimitz Hwy. towards both Waiakamilo Rd. and Piers 39 and 40 will both be prohibited and detoured via u-turn movements on Nimitz Hwy.

• **Traffic Detour for Work at Dillingham Blvd**

8:30 am to 3:30 pm & 7:00 pm to 5:00am

(7 days a week)

All left turn movements from Dillingham Blvd. onto Waiakamilo Rd. and from Waiakamilo Rd. onto Dillingham Blvd. will be prohibited and detoured via Kohou St., Kaumualii St., McNeill St., and Kalani St. Through and right turn movements will be maintained.

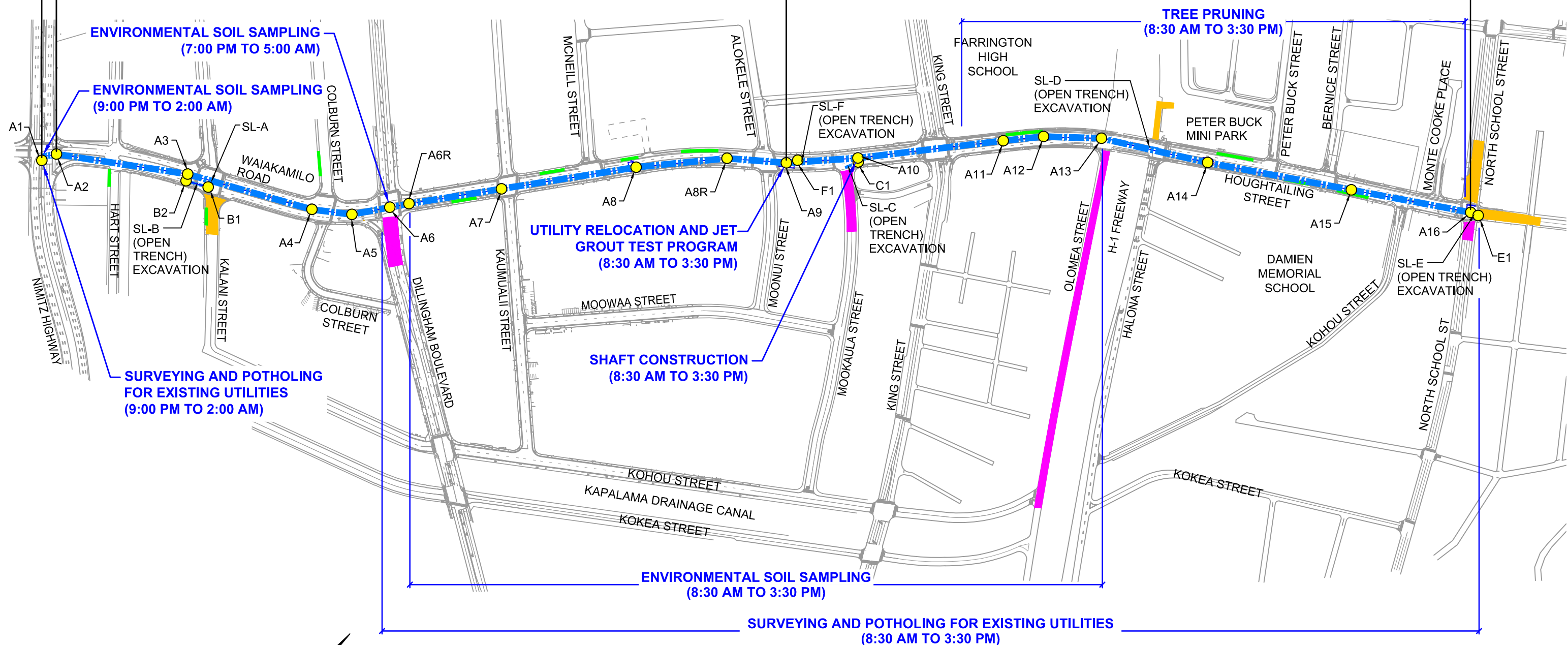
CONTACT INFORMATION

For more information about this project, please visit the project website: www.awasewer.org or call the project hotline at (808) 219-7009.

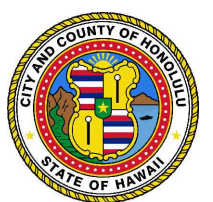
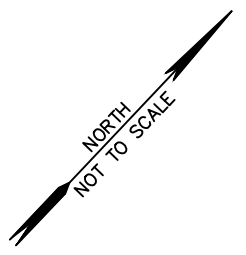
54" PIPE
INSTALLATION
BY OPEN
EXCAVATION

54" PIPE INSTALLATION BY MICROTUNNELING

42" PIPE INSTALLATION BY MICROTUNNELING



- LEGEND:
- NEW SEWER MANHOLE
 - NEW SEWER LINE
 - ABANDONED SEWER MANHOLE AND SEWER LINE WORK AREA
 - TEMPORARY EQUIPMENT STORAGE AREA
 - TEMPORARY BYPASS WORK AREA



CITY AND COUNTY OF HONOLULU
DEPARTMENT OF ENVIRONMENTAL SERVICES

**AWA STREET WASTEWATER PUMP STATION
FORCE MAIN AND SEWER SYSTEM IMPROVEMENTS
WAIAKAMILO ROAD TRUNK SEWER, C&C JOB NO. W5-16**